



# CAPE



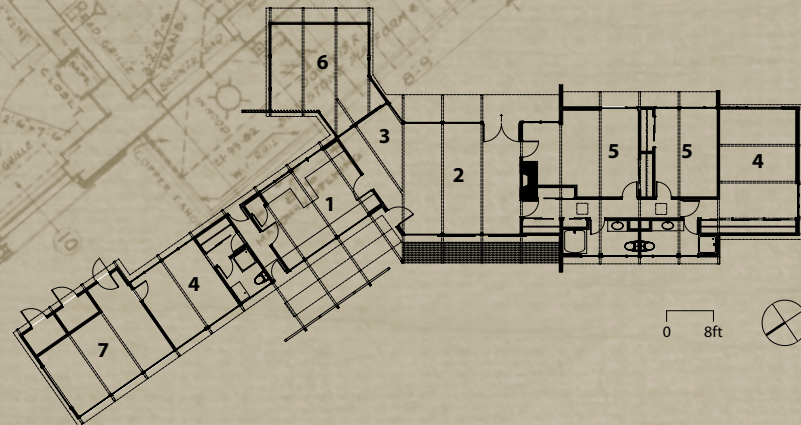
# C O D M O D E R N

Wellfleet, Massachusetts, USA

In 1948 Nathaniel Saltonstall, an architect and one of the founders of Boston's Institute of Contemporary Art, established The Colony Club of Wellfleet as a private club for art collectors. In 1952 he built several homes in the International Style for of the club's members on nearby Chequesett Neck. The current owners of one of these homes wanted to update and expand their house.

Post-intervention, the floor plan illustrates three distinct wings organised around a core living area. One wing provides a bedroom and playroom for the children, the second is specifically designated for guests and the new third wing contains the parents' suite as well as access to an indoor lap pool on the lower level. Each wing provides a direct connection to a private exterior space. Relocating the kitchen from what was originally the servants' wing allowed communal family activities to be centred in the house. The indoor dining room, outdoor dining terrace and screened porch are accessed directly from the living room and kitchen.

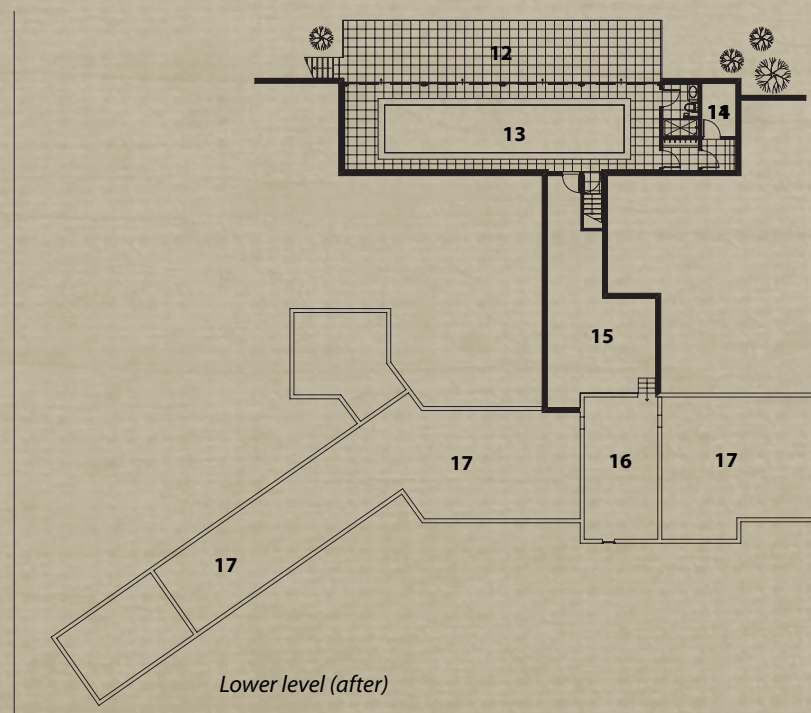
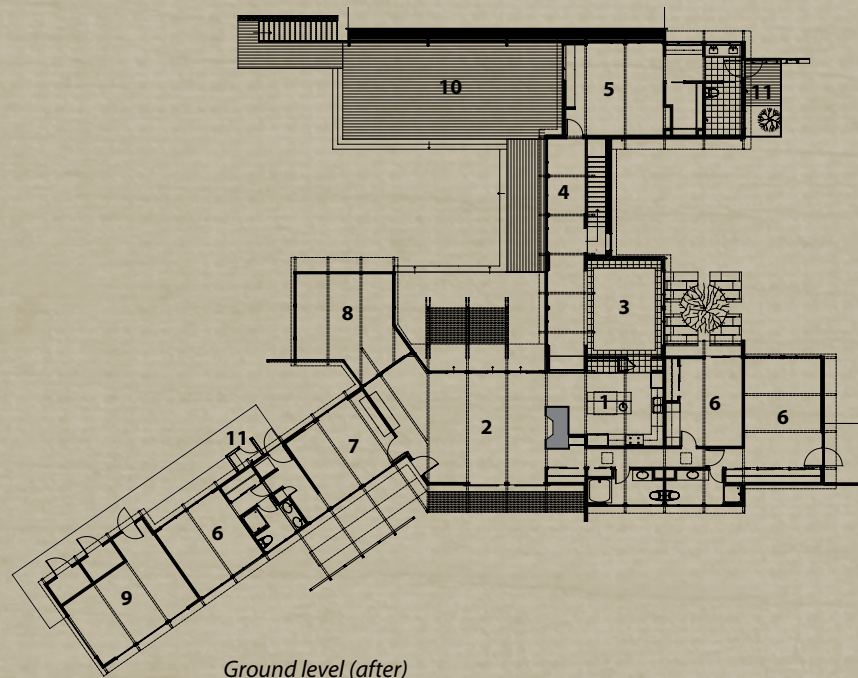
The new addition utilises the structural vocabulary and materials of the original house to provide a unified architectural statement.



# Cape Cod Modern

HAMMER ARCHITECTS

PHOTOGRAPHY: Peter Vanderwarker (renovation); Mark Hammer (existing)



- 1 Kitchen
- 2 Living
- 3 Dining
- 4 Connector
- 5 Master bedroom
- 6 Bedroom
- 7 Playroom
- 8 Screened porch
- 9 Garage
- 10 Deck (pool below)
- 11 Outdoor shower
- 12 Terrace
- 13 Pool
- 14 Mechanical
- 15 Basement
- 16 Existing basement
- 17 Existing call space

0 8ft





